



PETRAS
PROPERTY



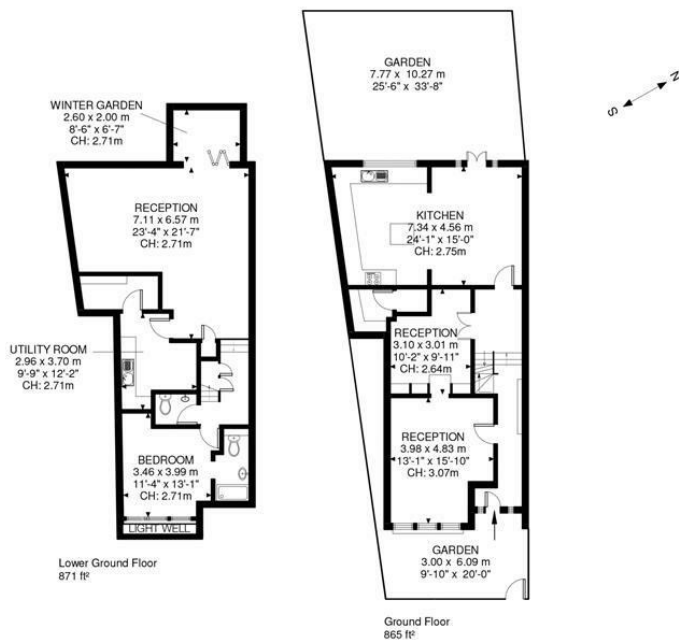
36 Crieff Road, London, SW18 2EA £6,300 Per month

A substantial six bedroom family home close to Wandsworth Common.

The house is arranged over four floors stretching over 3,000 sq ft.

As you enter, you have a formal reception room to the front which leads through to a smaller reception room/study. The large eat in kitchen opens onto the garden to the rear. On the lower ground floor, there is a large reception room/playroom, a kitchenette/utility room, a cloakroom and a bedroom with ensuite shower room. Over the top two floors, there are a further five bedrooms and three bathrooms including the master suite.

Crieff Road is a quiet residential road close to Wandsworth Common. The house is available to rent from early November on an unfurnished basis.



Crieff Road, SW18
 Approximate Gross Internal Area
 281.33 SQ.M / 3028 SQ.FT

KEY: CH = Ceiling Height
 [Restricted Head Height]

Illustration for identification purposes only. Not to scale.
 Floor Plan Drawn According To RICS Guidelines.



Energy Efficiency Rating		Current	Potential
Very energy efficient - lower running costs			
(92 plus) A			
(81-91) B			
(69-80) C			
(55-68) D		66	80
(39-54) E			
(21-38) F			
(1-20) G			
Not energy efficient - higher running costs			
England & Wales		EU Directive 2002/91/EC	
Environmental Impact (CO ₂) Rating		Current	Potential
Very environmentally friendly - lower CO ₂ emissions			
(92 plus) A			
(81-91) B			
(69-80) C			
(55-68) D			
(39-54) E			
(21-38) F			
(1-20) G			
Not environmentally friendly - higher CO ₂ emissions			
England & Wales		EU Directive 2002/91/EC	

These particulars, whilst believed to be accurate are set out as a general outline only for guidance and do not constitute any part of an offer or contract. Intending purchasers should not rely on them as statements of representation of fact, but must satisfy themselves by inspection or otherwise as to their accuracy. No person in this firm's employment has the authority to make or give any representation or warranty in respect of the property.